



JOIN US FOR THE 37TH ANNUAL

CONVEX END-TO-END

SATURDAY, APRIL 27, 2024



Platinum
Sponsors



Deloitte.

CONTENTS

03-07	Thank You Letters
08	Event Schedule & Transport
09	Event Map
10	Water Stops & Restrooms
12	Registration & Volunteers
13	Impact in Numbers
14	Fundraising
15	Fundraising Prizes
16-17	2024 Charities
18	Safety Tips & Important Information
19	FAQs
20	Sponsors
21	Sustainability
22	Thank You



Convex is thrilled to be supporting the 2024 Convex End to End.

We hope as many of you as possible can get involved, by actively running, cycling, walking or providing your valuable charitable support. Whatever you decide, we hope that everyone joins in the fun community day for a great cause.

We thank you for your participation in whatever form and look forward to seeing you on Saturday 27 April.

A handwritten signature in black ink that reads "Paul Simons".

Paul Simons

Convex Bermuda – CEO





A HUGE THANK YOU!

To all the amazing volunteers who are with us every step of the way. Without your smiles, support and encouragement the Convex End to End would not be possible. Thank you from everyone at Convex.



Welcome



We are proud to celebrate another year of fitness, fun and fundraising for our community as a platinum sponsor of the Convex End-to-End (ETE).

Whether you are taking on the challenge of getting from one end of our island to the other by land or by water, we wish you the best of luck.

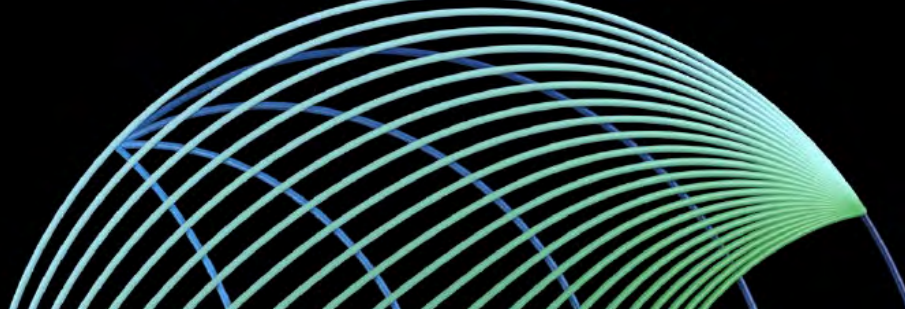
We will be there to support you and will be ready to help hydrate you at our usual water spot at Whale Bay Road, together with our mascot Vern.

Our thanks go to the organisers, volunteers, and fellow sponsors for their contributions in making this event a resounding success every year.

We hope you enjoy the challenge and have a fun and rewarding day knowing your efforts are all for a good cause.

Good luck!

Jody Feldman
EVP, Managing Director, Bermuda
The Bank of N.T. Butterfield and Son Limited



Deloitte welcomes you to the 2024 Convex Bermuda End-To-End.

This vital community event on the annual Bermuda calendar brings together many people who help “fun-raise” for charities across the island.

We are grateful to be a Platinum sponsor for the last five years. As part of Deloitte’s WorldClass initiative, which aims to empower 100 million people globally through partnerships and programmes, we dedicate our time and resources to the Bermuda community year-round. For this initiative, our staff participate by walking, cycling, or volunteering to prepare for and manage our Somerset Bridge water stop.

We look forward to welcoming you to Somerset Bridge for rest, refreshments, and revitalization!

Remember to stretch, stay hydrated, and don’t forget the sunscreen.

Kind Regards,

John Johnston
CEO, Deloitte Bermuda



Here for the challenge

You've got this

As proud Platinum Sponsors of the **2024 Convex End to End**, we'll be cheering you on every step of the way because it is through your commitment that this event is a success. Look out for Butterfield and our mascot Vern at Whale Bay Road for a refreshing hydration stop. Let's have fun and fundraise, together.

The Bank of N.T. Butterfield & Son Limited is licensed to conduct banking business by the Bermuda Monetary Authority. Address: 65 Front Street, Hamilton HM 12, Bermuda.



Deloitte.

Come together
Thrive together
Walk together

Deloitte is a proud sponsor of the Convex End-to-End. Let's come together — today and every day — for our community. And let's make it count.

www.deloitte.com/bm



EVENT SCHEDULE

TIME	EVENT	LOCATION
7:00am	End-to-End 24.1 Mile Walk	St. George's Town Square
7:00am	End-to-End-to-End Cyclists	Royal Naval Dockyard
9:00am	End-to-End Cyclists	St. George's Town Square
10:00am	Middle-to-End 14 Mile Walk	Point Pleasant Park
10:30am	Rowers	White's Island (through Bermuda Rowing Association)
11:00am	Middle-to-End Cyclists	Botanical Gardens, South Road Entrance
2:00pm	3 Mile Fun Walk & Cycle	Beacon Hill, Somerset
FINISH	All sub-events end at the Royal Naval Dockyard on the Lawn, at Snorkel Park or in the Camber	

TRANSPORT FROM HAMILTON TO ST. GEORGE'S

TIME	TRANSPORT	LOCATION
6:30am	Bus	Bus Terminal, Hamilton
7:30am	Ferry	Ferry Terminal, Hamilton

TRANSPORT FROM DOCKYARD TO HAMILTON

Cycles are permitted.

TIME	TRANSPORT	LOCATION
12:30pm	Ferry	Island Tour Centre Dock
1:45pm	Coral Princess	Island Tour Centre Dock
2:15pm	Ferry	Island Tour Centre Dock
3:30pm	Coral Sea	Island Tour Centre Dock
4:00pm	Ferry	Island Tour Centre Dock
4:30pm	Coral Princess	Island Tour Centre Dock
5:20pm	Coral Sea	Island Tour Centre Dock
5:45pm	Ferry	Island Tour Centre Dock



SCAN OR CLICK FOR THE ANIMATED MAP

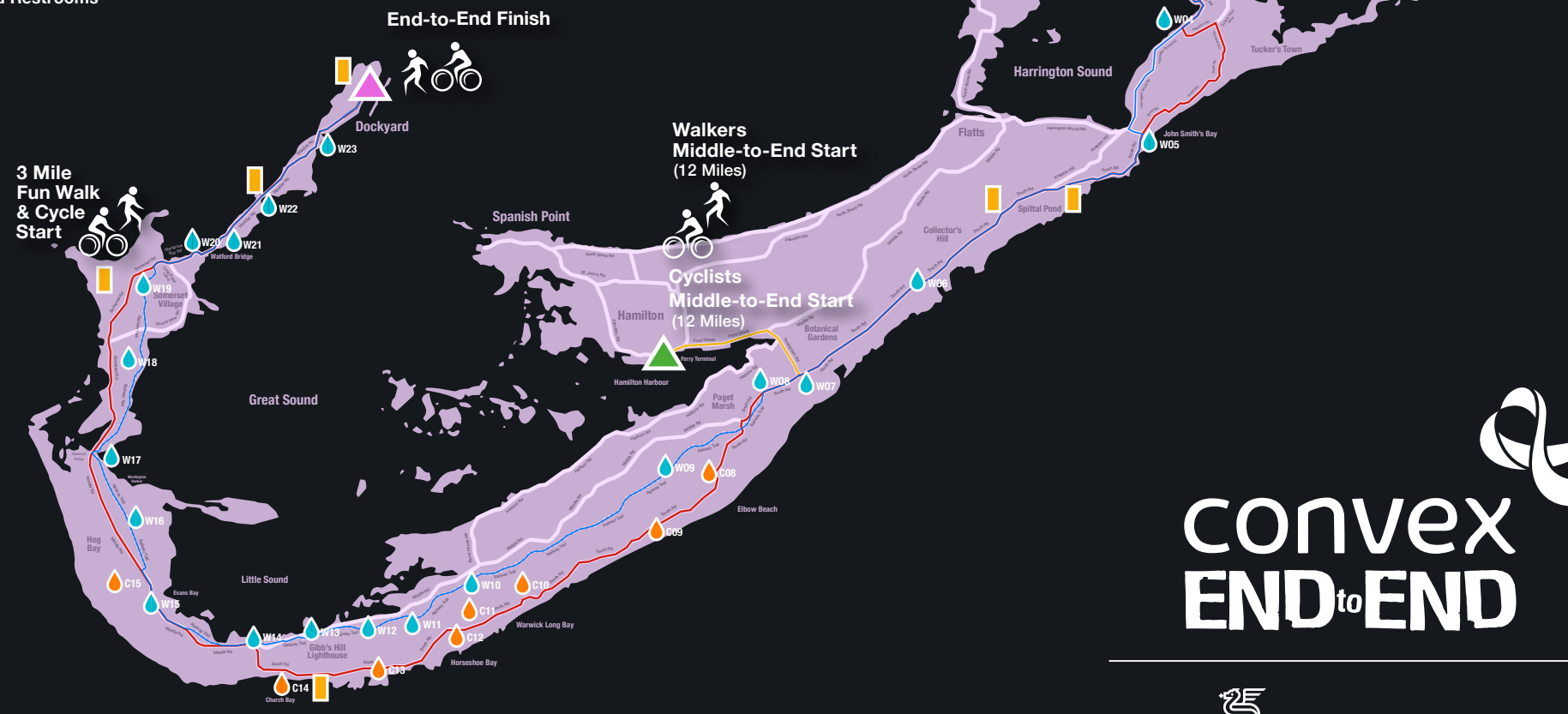


JOIN KBB AND ETE IN
KEEPING BERMUDA BEAUTIFUL
TAKE YOUR LITTER HOME OR TO A BIN

St. John's Ambulance is on call,
if you need assistance, call 911

End-to-End Start
(24.1 Miles
Walk or
Cycle)

- Start Location
- All Events Finish
- End-to-End Walk
- End-to-End Cycle
Cyclists are required to follow the roads,
not the Railway Trail
- Middle-to-End
- Water Stop & Restroom
- Cyclists Water Stop & Restroom
- Extra Restrooms




convex
END^{to}END

WATER STOPS & RESTROOMS

- W01 Kindley Field Road - Bethel AME
- W02 Cahow Way @ Kindley Field Road - Menzies Aviation
- W03 Trinity Church Road - Transitional Community Services
- W04 Paynter's Road @ Harrington Sound Road - Rosewood Resort
- W05 John Smith's Bay - Walkers
- W06 Ariel Sands Entry - X-Roads Warriors
- W07 Grape Bay Drive @ Trail/Paget - HSBC
- W08 Harmony Hall @ South Road - Clarien
- W09 Cobbs Hill Road @ Trail - Bermuda Commercial Bank
- W10 Camp Hill @ Trail - Bermuda Musical & Dramatic Society
- W11 Hunt's Lot - A Few Good Men
- W12 Fairmont Drive - Markel
- W13 Tribe Road No. 3 - Mass General Brigham
- W14 Barnes Corner - Convex
- W15 Whale Bay Road @ Trail - Butterfield
- W16 Caroline Bay @ Trail - Butterfield Championship
- W17 Somerset Bridge - Deloitte
- W18 Sound View Road - Bermudair
- W19 Beacon Hill @ Trail - Athene
- W20 Mangrove Bay - Argus
- W21 Watford Bridge - Digicel
- W22 Heydon/Malabar Road - Allied World
- W23 Cockburn Road - SunLife

CYCLING WATER STOPS

- C08 Bermuda College Entrance - Lahey Hospital
- C09 Warwick Rubis - Terceira's supported by Windreach
- C10 Warwick Long Bay Playground Entry - National Honor Society | Mount St. Agnes
- C11 Lay-By /Regiment Camp opposite Frith Estate Rd - Pedego Mechanical Stop
- C12 Overlook @ Horseshoe Bay - DHL
- C13 Overlook @ Sonest Bay (Hamilton Princess) - Action on Alzheimer's & Dementia
- C14 Church Bay/South Road - RenRe
- C15 Death Valley Playground/Port Royal Entry - The Give Back

**Please note that cyclists share an additional 13 water stops with walkers*

EXTRA RESTROOMS

- R01 Spittal Pond East (public) West (portaloo)
- R02 Collectors Hill Esso
- R03 Church Bay Car Park (public)
- R04 Long Bay Park
- R05 Boaz Island Shell



HELP US TO SUPPORT THE BERMUDA COMMUNITY AND OUR 2024 CHARITIES

REGISTRATION

Register online at www.bermudaendtoend.bm to make sure you get your 2024 Convex End-to-End T-shirt and goodie bag! Pick up between Monday April 22 - Friday April 26 at the event office in Washington Mall.

\$50 for adults

\$25 for under 18 yrs of age

Your entry fee includes:

- Great quality t-shirt
- Canvas tote bag containing a selection of quality giveaways and snacks
- Finish medal
- Entertainment along the route
- Free food and drinks along the route
- Free bus and Blue Route ferry rides throughout the day (with event number)

Please help us be sustainable, and bring your own water bottle.

VOLUNTEERS

Can't participate this year? Volunteer!

Contact us at info@bermudaendtoend.bm

All volunteers will be entered in to a prize draw for:



Two round-trip BermudAir tickets



\$20.00 gift cards to The Duchess

EVENT OFFICE

The event office will be open from Monday April 22 - Friday April 26 in Washington Mall, next to English Market. Enter from Church Street, located at the bottom of the stairs. You may also purchase a token for the Hamilton-St. George's ferry for cyclists on event day.

OUR IMPACT IN NUMBERS

\$6.7 MILLION RAISED

219 CHARITY GRANTS DISTRIBUTED
IN 36 YEARS

55,100 PARTICIPANTS

36 YEARS OF FUNDRAISING (1988-2024)

FUNDRAISING

Raise \$50 or more in donations, and make a significant boost to our charities.

2024 Grant Recipients:

WindReach, Transformational Living Centre (TLC),
Raleigh International, Coalition for the Protection of
Children, Action on Alzheimer's and Dementia

2024 Additional Donations:

Horticultural Skills Programme, St. John's Ambulance

FUNDRAISE AND WIN!

Thanks to our Silver Sponsor, BermudAir, you have the chance to win 2 Business Class tickets to any regular BermudAir destination!

How it works:

Register for this year's event and add your donation in increments of \$50 to be entered into the draw. \$50 = 1 entry. \$100 = 2 entries, and so on!

OR raise the most funds for charity and also be in for a chance to win! See details on the next page.

The more you raise, the higher your chances to jet off in style. Ask your employer to match your funds! *100% of your donations stay in Bermuda to be distributed to our 2024 charities.*

2024 TOP INDIVIDUAL FUNDRAISER PRIZES



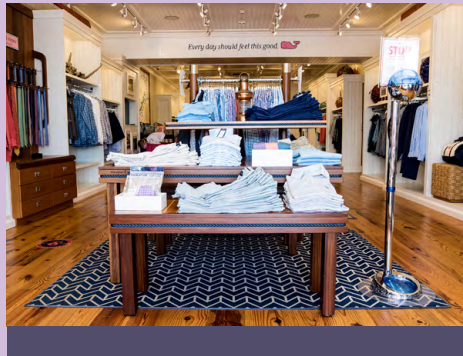
Hamilton Princess



BermudAir



Alchemy Fitness



Vineyard Vines Bermuda

JOAN DISMONT FUNDRAISER AWARD

With a zany style and zest for life, Joan Dismont put her indelible mark on the Bermuda End-to-End as a top fundraiser and participant for over 30 years. Our ETE community misses her terribly and her memory lives on through this award, in her honor.



- Hamilton Princess, overnight stay with breakfast for two in a premier suite
- Two round-trip tickets on Bermudair
- Hamilton Princess, overnight stay with breakfast for two in a deluxe room
- Astwood Dickinson Tissot Sports Watch
- Hamilton Princess, lunch for two in the Crown & Anchor Restaurant
- Exhale Spa at the Hamilton Princess, Flow Massage appointment
- Two 1 month memberships (\$200 value) to Alchemy Fitness for Unlimited Group Fitness and Mat Pilates. Note: for age 18+.
- Three Vineyard Vines \$150 gift cards
- Three \$100 Gibbons Company, sportswear gift cards

The Top Individual Fundraisers will be awarded at a prize presentation in June 2024. The Top Fundraiser Team receives a private reception in the Executive Offices at Convex, overlooking Hamilton Harbor (20 persons max.)

If you have pledges/funds to turn in after the event, call 292-9741 ext 108. For collection of cash, send to Bermuda End-to-End, Suite 544 @11 Bermudiana Road, Hamilton HM08. Or direct deposit to BNTB 060 401 589 0010.

OUR 2024 CHARITIES

GREAT FUN FOR A GREAT CAUSE

The ETE Charitable Trust is a registered charity (#558). The focus of the End-to-End remains steadfast on addressing the pressing needs of the Bermuda community. The proceeds generated from the 2024 End-to-End event will be dedicated to funding non-sectarian charitable programs in Bermuda, as well as supporting operational expenses that contribute to the preservation and improvement of the Bermuda Railway Trail, the Bermuda community and families.



WindReach

WindReach exists to enrich the quality of life for individuals with diverse support needs. Their fully-accessible 4 acre facility features a multi-purpose Activity Centre, Animal Zone, Therapeutic Riding Centre, and playground. On average 200 participants benefit from their programmes weekly, ranging in age from preschoolers through to our older adult community.



Transformational Living Centre (TLC)

TLC is a purpose-built housing facility that seeks to address the growing problem of homelessness among families with children in Bermuda. It also makes provision to accommodate secure emergency housing needs.



Raleigh International

Using overseas expeditions, local training and continued coaching, Raleigh challenges young Bermudians to harness their full potential and develop skills for life. Their programme structure and philosophy is designed to help young people develop skills and self-confidence in a fun yet challenging environment beyond the classroom and workplace.



Coalition for the Protection of Children

The Coalition's mission is to heighten public awareness of children's issues, advocate on behalf of families and provide services which address critical but unmet needs. They work to alleviate the dependency on financial assistance, support equal access to opportunity and promote awareness in the community for the issues that children and their families face.



Action on Alzheimer's and Dementia (AAD)

AAD works to advocate for those living with dementia in Bermuda; increase general public awareness about Alzheimer's disease and other dementias; and forge links between the public, medical community, care homes, and government. They provide training, education, daily activities, support groups for care partners and they help fund occupational therapy services.

2024 ADDITIONAL DONATIONS



Horticultural Skills Programme

The Skills Development Program run by the Bermuda Government Department of Parks is a training and development opportunity for young people aged 19-25 years interested in horticulture and landscaping. The program offers structure, skills training and support to assist participants in finding employment opportunities in both the public and private sector.



St. John's Ambulance

As one of the island's oldest charities, St John Ambulance has been attending to the first aid needs of the Bermuda community since 1894. They teach valuable life-saving skills through their training programs and provide medical coverage at public events. They attend over 200 community events annually and rely entirely on a dedicated team of volunteers to operate.

SAFETY TIPS & IMPORTANT INFORMATION

SAFETY TIPS

- Road marshals and event safety features are available from 7:00am – 4:00pm only
- It is important to start your event at the listed start time
- The event closes at 4:00pm
- Take sunscreen and a hat
- Drink plenty of water
- Wear good walking shoes
- Cycle helmets are mandatory

TRANSPORT

Car: Please use public transportation whenever possible

Bus: Refer to regular public bus schedule. Ride free with event number.

Ferry: Convex End-to-End participants ride free on all Blue Route ferries during regular service throughout event day, on showing their number tag

- Ferry departure times as published by Sea Express. Capacity of ferries is 350 persons maximum
- Ferries from Dockyard are 12:45pm, 2:30pm, 4:00pm and 5:30pm
- ETE Cyclists: Ferry departs Hamilton at 7:30am for the 9:00am start
- Tickets are available at \$15 each for bike transfer. Space is limited. First come, first served
- Additional boat lift from Dockyard will be available for ETE participants, with event number, at 2:00pm and 3:30pm

Thank you to Marine and Ports and the Bermuda Public Transportation Board (PTB) for their support

IMPORTANT INFORMATION

- Event number must be displayed at all times during the event to receive free transport, participant extras and a medal at the Finish
- Fun Walk/Cycle is the appropriate event for young participants
- All children who participate must be accompanied by an adult at all times
- Event water stops will fill your reusable water bottles – no drink cups will be available
- Updates, in the event of adverse weather, will be available at www.bermudaendtoend.bm, calling 292-6992 or emailing info@bermudaendtoend.bm

FAQS

1. I WOULD LIKE TO PARTICIPATE WITH MY YOUNG KIDS, WHAT EVENT WOULD BE BEST?

The Fun Walk/Cycle starting at 2:00pm from Beacon Hill in Somerset.

2. CAN I SWITCH EVENTS?

You may participate in any event you wish, even if you registered for a different event.

3. CAN I COLLECT A NUMBER, GOODIE BAG AND T-SHIRT FOR SOMEONE ELSE?

You may collect on behalf of friends, families and co-workers.

4. I HAVE A QUESTION REGARDING MY PERSONAL CONTRIBUTION PAGE!

Please send your questions by email to richard@bdatix.bm

5. WHAT'S THE BEST WAY TO GET TO THE START LINE OF MY EVENT?

All participants ride free on the buses and Blue Route ferries on event day. Refer to the regular public schedule, or for ETE walkers and cyclists, take the bus or ferry to St. Georges:

- 6:30am Bus From the Bus Terminal, Hamilton to St. George's (tokens will be available to purchase from the Event Office)
- 7:30am Ferry From the Ferry Terminal, Hamilton to St. George's

6. WILL WATER BOTTLES BE PROVIDED AT THE WATER STOPS?

No, please help us be sustainable and bring your own water bottle. You can fill it up at the water stops.

7. ARE THERE RESTROOMS ALONG THE ROUTE?

Yes there is a restroom at every water stop, these are marked on the Event Map on page 9, and listed on page 10. There are also public restrooms available in the Clocktower Mall at the finish.

8. WHAT IS THE ROUTE FOR CYCLISTS?

Cyclists should use Middle and South Roads. There will be special cyclist water stops along the route. The Railway Trail is reserved for walkers only.

9. WHAT IF I HAVE DONATIONS TO TURN IN AFTER THE EVENT?

Call 292-9741 ext 108. For collection of cash, send to Bermuda End-to-End, Suite 544 @11 Bermudiana Road, Hamilton HM08. Or direct deposit to BNTB 060 401 589 0010.

10. HOW DO I CONTACT THE BERMUDA END-TO-END?

Email: info@bermudaendtoend.bm

Event Hotline: 441- 292-6992

Call: 441-292-9741

OUR SPONSORS

THANK YOU TO THIS YEAR'S SPONSORS FOR THEIR INCREDIBLE SUPPORT, WITHOUT YOU THE END-TO-END WOULD NOT BE POSSIBLE!

Title Sponsor



Platinum Sponsors



Gold Sponsors



Silver Sponsors



Bronze Sponsors

Bermuda Coast Guard • Bermuda Tourism Authority • Bermuda Sanitation • City of Hamilton • Corporation of St. George • Freisenbruch Insurance Services Ltd. • Great Sound • Island Advertising Specialities • John Barritt & Son • Pepperidge Farm • Triangle Life • Undercover Tents • Washington Properties (Bermuda)

Patron Sponsors

A Few Good Men • Alchemy Fitness • Allied World • Argus Group • Bermuda Commercial Bank • Bermuda Musical and Dramatic Society • Bethel AME Church • Butterfield & Vallis • Butterfield Bermuda Championship • Clarien Bank • Digicel • Greenlight Energy • HSBC • Lahey Hospital • Markel • Mass General Brigham • Mount Saint Agnes Academy • Pedego • Rosewood Bermuda • RUBIS Warwick • Walkers Global • X-Roads Warriors

SUSTAINABILITY

The End-to-End (ETE) is committed to ESG initiatives. This is demonstrated by the grassroots support of the environment and sustainability for Bermuda, both of which are considered in conjunction with the organisation of the annual event. Additionally, we are particularly proud of our commitment to the Bermuda Railway Trail.

THE ETE'S HISTORY OF SUPPORT FOR SUSTAINABILITY

2004	ETE's Railway Trail vision project. In our role as a steward of the Trail, ETE sponsored a consultation by trail experts from Washington DC to determine which enhancements were possible
2008	ETE funded Green Rock's BYOB campaign - the first on the Island
	ETE instituted a BYOB policy for the event, with water stops equipped with 5-gallon bottles on cradles (Pure Water donated and continues to do so) Estimate of plastic bottles distributed by our water stops in previous years - 30,000! In 2008 - none!
2014	ETE Catlin Marin Grant - \$100K - Educational, research and/or preservation of our marine environment
2015	Along with KBB, Greenrock, Ministry of Public Works Waste Management and BEST, ETE was a founding member of the Bermuda Green Cooperative that initiated a Leave no Trace policy for all events on the Island
	ETE event was designated as a Green Water stop Event with a Leave no Trace goal
2017	ETE donates three benches along the Railway Trail
2021	ETE Board determines that annual funding for the enhancement of the Railway Trail will be part of the charitable giving process each year
2022	ETE supports Bermuda National Trust's 3 nature reserves adjacent to the Railway Trail and provides oases of green and quiet space for uses of the trail and local residents
	ETE conducts a thorough review of its practices and supplies to enhance its sustainability practices
2023	ETE supports the BZS micro forest project that establishes ecosystems along the Railway Trail
	ETE no longer supplies sponsored water bottles in the entry kit. The event poly giveaway bag has been changed to a cloth version. Deloitte supplied eco flip-flops to all participants
2024	ETE goes paperless with our digital event guide

THANK YOU

THANK YOU

THANK YOU

THANK YOU

THANK YOU

THANK YOU

THANK YOU



Platinum
Sponsors



info@bermudaendtoend.bm | bermudaendtoend.bm | [Instagram](#) | [Facebook](#)